

- Moulded case Split-core Current Transformers.
- Tough resilient flame retardant UL-94V0.
- Temperature range -20°C to 70°C
- Metering class 1.0
- Test voltage 3Kv 50Hz. 1min.
- IEC44-1,IEC185,BS3938,DIN42600
- Tropicalised design with Insulation Class E and thermal 120°C
- Totally enclosed in tough, self extinguishing moldings.
- Operating voltage 0.72KV

Application

A range of moulded case Split-core Current Transformers, with in-built terminal covers. Primary ranges available up to 5000A with 5A secondary as standard. Split-core Current Transformers has been designed to meet the growing demand for installation into existing networks. The split-core allows installation without disconnecting cables or busbar circuits with simple insertion of the CT. The products are ideal for retro-fitting and are therefore popular in the Energy Management and Power Factor Correction industries.

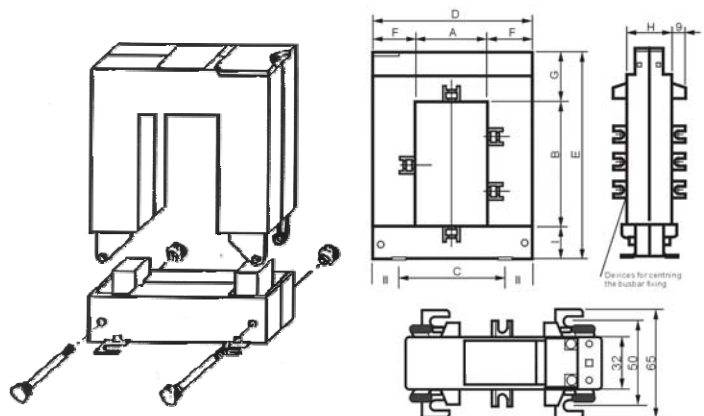
Characteristic

TYPE	PRIMARY	BURDEN (VA) (CLASS1.0)	BURDEN (VA) (CLASS3.0)
SC23	100	2	3
	150	2	3
	200	2	3
	300	4	6
	400	6	10
SC58	150	2	2
	200	2	2.5
	250	3	4
	300	4	6
	400	5	10
	500	5	15
	600	5	15
	750	6	18
	800	7	18
	1000	10	20
SC88	1200	11	24
	1500	17	30
	250	3	4
	300	4	6
	400	4	10
	500	5	15
	600	5	15
	750	6	18
	800	7	18
	1000	10	20
SC812	500	5	12
	600	5	14
	750	6	17
	800	7	18
	1000	10	20
SC816	1200	11	24
	1500	17	30
	1000	15	20
	1500	20	25
	2000	20	25
	2500	20	25
	3000	25	30
	4000	25	30
	5000	25	30

Characteristic

Operating voltage level	0.72kV
Rated insulation level	3kV
Frequency response	Linear 50...60Hz
Rated short time thermal current (th)	20In
Rated dynamic current (dyn)	2.5th
Working temperature	-10 to +70°C, Storage -40 to +80°C
Moulding	Self extinguishing to UL94V0
Primary current	100A...5000A.
Secondary	5A
Enclosure	IP40
Standard	IEC185, UME21, 088-1, UL94, VDE 0414

Dimension



TYPE	A	B	C	D	E	F	G	H	I	KG
SC23	20	30	51	89	111	34	47	40	32	0.75
SC58	50	80	78	114	145	32	32	32	33	0.90
SC88	80	80	108	144	145	32	32	32	33	1.05
SC812	80	120	108	144	185	32	32	32	33	1.25
SC816	80	160	120	184	245	52	52	52	38	4.3